

JUKI MO-3600 THREADING

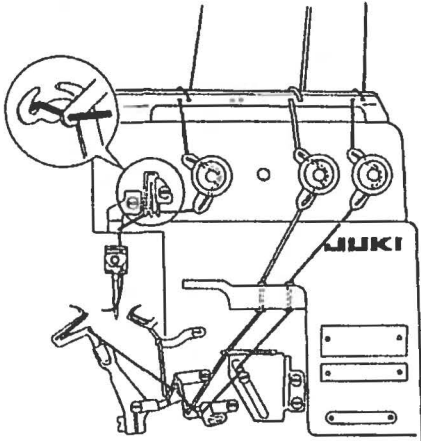
4. THREADING THE MACHINE



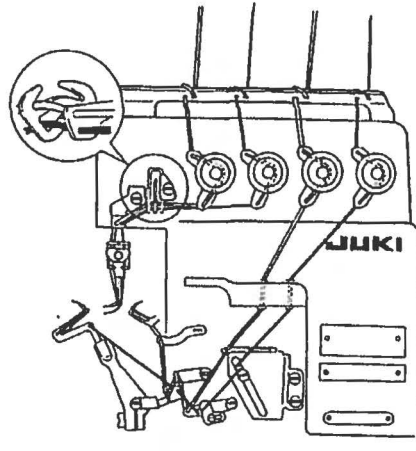
Carry out the following steps of procedure after the power switch has been turned OFF.

Thread the machine according to the threading chart given below. (The same chart is on the inside of the looper cover.)

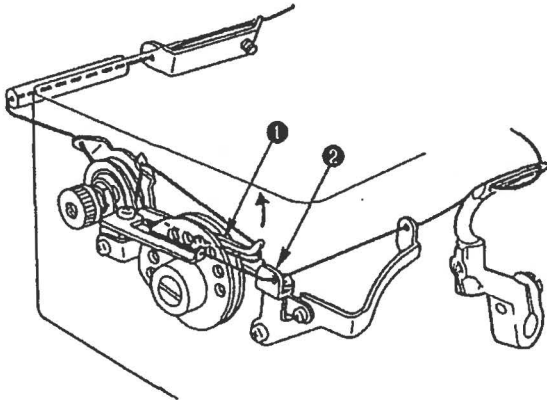
MO-3604



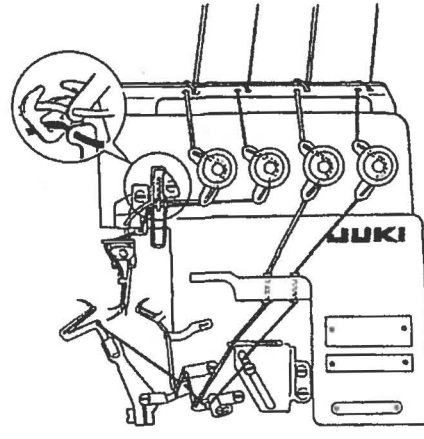
MO-3614



MO-3616

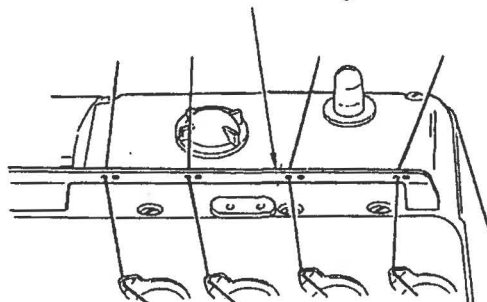


(Caution) Raise looper thread cam thread guide ① and perform threading. Return looper thread cam thread guide ① to its home position and securely fix it to retaining spring ②.



(Caution) Be sure to pass the needle thread for double chainstitch through the needle thread take-up lever. (Pass the needle thread for overlocking through the thread take-up lever located outside.)

Intermediate thread guide



(Caution) When using an untwisted thread such as woolly nylon thread or weak thread, do not wind it round the intermediate thread guide.